



INFORMATION BROCHURE



Govt. Model Engineering College

Managed by Institute of
Human Resources Development

2020 - 2021

*“ Evolve into an academy of excellence to serve
the knowledge society.”*

The background image shows a multi-story, modern building with a light beige facade and large windows. The building has a distinctive stepped design with multiple levels of balconies and overhangs. The sky is a clear, pale blue. In the foreground, there is a green lawn and a white car parked near the entrance. A blue semi-transparent banner is overlaid on the middle of the image, containing the college's name and vision/mission statements.

MODEL ENGINEERING COLLEGE

(UNIT OF IHRD)

OUR VISION

- Evolve into an academy of excellence to serve the knowledge society.

OUR MISSION

- Implement quality education through teaching learning process.
- Inculcate culture of technical innovations and creativity.
- Instil high standards of professional ethics and social values.



Dear Parent,

Welcome to Model Engineering College.

Model Engineering College, Thrikkakara, (MEC) is one of the most prestigious institutions of the country, having made it to the list of most sought after colleges in the country in the span of just 32 years. It is the first engineering college to be established by the government of Kerala under the Institute of Human Resource Development (IHRD). The college has been consistently racking up great placement records each year with a lot of big companies recruiting from the campus. MEC is also the only college from Kerala to make it to the top 50 colleges in India as per the Outlook magazine, which featured the college as the 37th best college.

MEC is affiliated to the APJ Abdul Kalam Technological University and offers a total of five undergraduate and four postgraduate courses. It is also a recognized Research Centre in Electronics and allied engineering streams. The institution has always followed its philosophy of training and research that emphasizes the relationship between knowledge and its applications, with the aim to mould engineers capable of bridging the digital divide. The college has always looked forward to bring out the best of each individual.

Principal



B. TECH COURSES OFFERED

Computer Science and Engineering

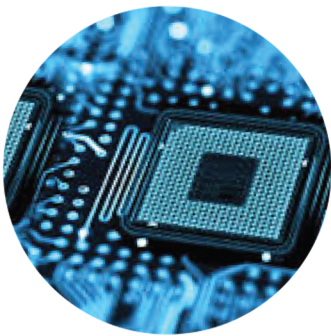
The foremost objective of the Computer Science and Engineering programme is to hone technical skills demanded by today's engineering professionals by providing a sound technical platform and the required knowledge base.



Electronics and Communication Engineering

The Electronics Engineering Department of Model Engineering College offers premier professional training with an eye on the modern developments in electronics and information technology.

The Electronics and Communication Engineering curriculum is designed to give adequate emphasis on application of Electronics in Communication Systems and Signal Processing.



Electronics and Biomedical Engineering

This Course covers the basics required to help one get started in Biomedical Engineering. Over a period of 4 years, it covers a vast domain of health care engineering areas in Electronics and Biomedical such as Medical Physics, Signal Processing & Image Processing required in the biomedical field.



Electrical and Electronics Engineering

This Course draws from both Electrical Engineering and Electronics Engineering concepts. Power Systems, VLSI Design, Control System, Power Electronics, Computer Communication, Network Theory, High Voltage DC Transmission, Analog and Digital Circuits, C++ etc. are some of the subjects in the syllabus.



Mechanical Engineering

The Mechanical Engineering Department of Model Engineering College aims at providing professional training in the field of engineering physics and mathematics. This four year long course covers topics like thermodynamics, mechanics, thermal engineering, mechantronics among others, looking to hone the student into a fine mechanical engineer.



M. TECH COURSES OFFERED

Electronics with specialization in VLSI Design and Embedded Systems

System Chip Design, VLSI Circuit Design and Technology, Electronics System Design are the concepts given to the engineers in this course.



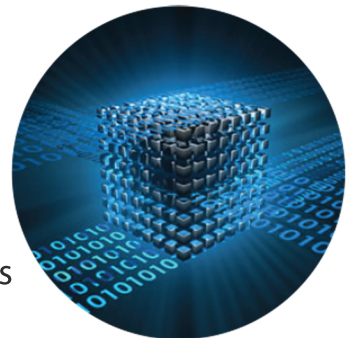
Mechanical Engineering with specialization in Energy Management

The objective of the course is to equip engineers to assess, preserve and manage energy resources in industries and other organisations. The course focuses on efficient utilization of thermal and non-conventional energy by effective management.



Computer Science with specialization in Image Processing

This course endows knowledge in Digital Image Processing, Advanced Data Structures and Algorithms, Pattern Recognition, Natural Language Processing and Medical Image Techniques. Engineers learn the core concepts of image systems through various topics like Data Compression, Multimedia Systems, etc.



Electronics with specialization in Signal Processing

This course aims at giving the students an exposure to subjects such as Digital Control System, Speech and Image Processing, Spectral Estimation, Machine Learning, Array Processing and Advanced Digital System Design.



Association)

The PTA is proud to have been associated with various developmental activities like ATM counter, security cabin, two-wheeler parking yard, running of college bus, identity card printer, renovation of basketball court, furnishing of MTech lab, girls and boys toilet block, drawing hall, garden maintenance, etc.

Executive Committee

Dr. Vinu Thomas	President (Principal)
Dr. Shine U P	Vice President
Dr. Sreenivas P	Secretary (Associate Professor, ME)
Dr. Binesh T	Associate Professor (EC)
Sri. Johnson Philip	Associate Professor (Physical Education)
Smt. Shyja P J	Assistant Professor (EEE)
Smt. Preena K P	Assistant Professor (CSE)
Sri. Rainold P R	Administrative Officer
Dr. Ajil Kumar A	Parent Member
Sri. Suresh Kartha	Parent Member
Smt. Bindu Achamma	Parent Member
Smt. Bindu Satyajith	Parent Member
Sri. Loy Abraham	Parent Member
Sri. Joju Jose	Parent Member
Sri. George Varghese	Parent Member
Smt. Sudha Kumari	Parent Member
Sri. Sreekumar B	Parent Member
Sri. Sajeevan	Parent Member

IMPORTANT CONTACTS

Dr. Vinu Thomas	Principal and President PTA	0484-2575592, 85470 05097
Dr. Jayasree V. K	HOD (EC)	9846332111
Dr. Remadevi S	HOD (Applied Science)	94478 10386
Dr. Rajesh V G	HOD (ME)	94472 28784
Dr. Preetha Theresa Joy	HOD (CSE)	9847547127
Dr. Bindu V	HOD (EEE)	85473 10981
Dr. Minimol B	HOD (EBE)	9447733806
Prof. Manilal D L	Warden Men's Hostel, Academic Co-ordinator 1st year, Chairman, Anti- ragging squad	93492 76717
Prof. Johnson Philip		94474 64759
Dr. M. V. Rajesh	Faculty in charge, Placement Cell	9447464687
Dr. Sreenivas P	Transportation Committee Chairman, PTA Secretary	93492 22799
Dr. Jaya V. L	P. G, Research Co-ordinator	9745108648
Dr. V Ittoop	Medical Officer	99468 33021
Anti Ragging Helpline		1800 180 5522

STAFF ADVISORS of B.Tech FIRST YEAR CLASSES

Smt. Mitty George	Electronics & Comm. Engg. A	9400680985
Smt. Jaisy M. A	Electronics & Comm. Engg. B	9495209745
Smt. Preena K. P	Computer Science & Engg. A	9446539309
Sri. Jiby J Puthiyidom	Computer Science & Engg. B	9447367335
Smt. Vidhya K	Electrical & Electronics Engg.	9496167940
Smt. Vijayalakshmi K	Electronics & Biomedical Engg.	9847093300
Dr. Sreenivas P	Mechanical Engg.	9746251572

PLACEMENT RECORD

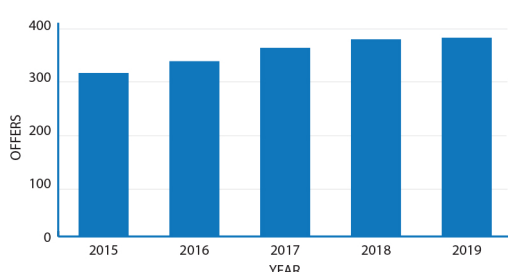
MEC has an impressive placement and internship record. The activities are handled by a well established and strong student-coordinated Placement Cell. The team works to ensure that student quality matches upto recruiter expectations. Over 80 companies recruit from the campus. Students of MEC take up two-month summer internships in companies working on cutting-edge technologies to gain deeper understanding of the industry trends

Dr. M. V. Rajesh
(Placement Officer)

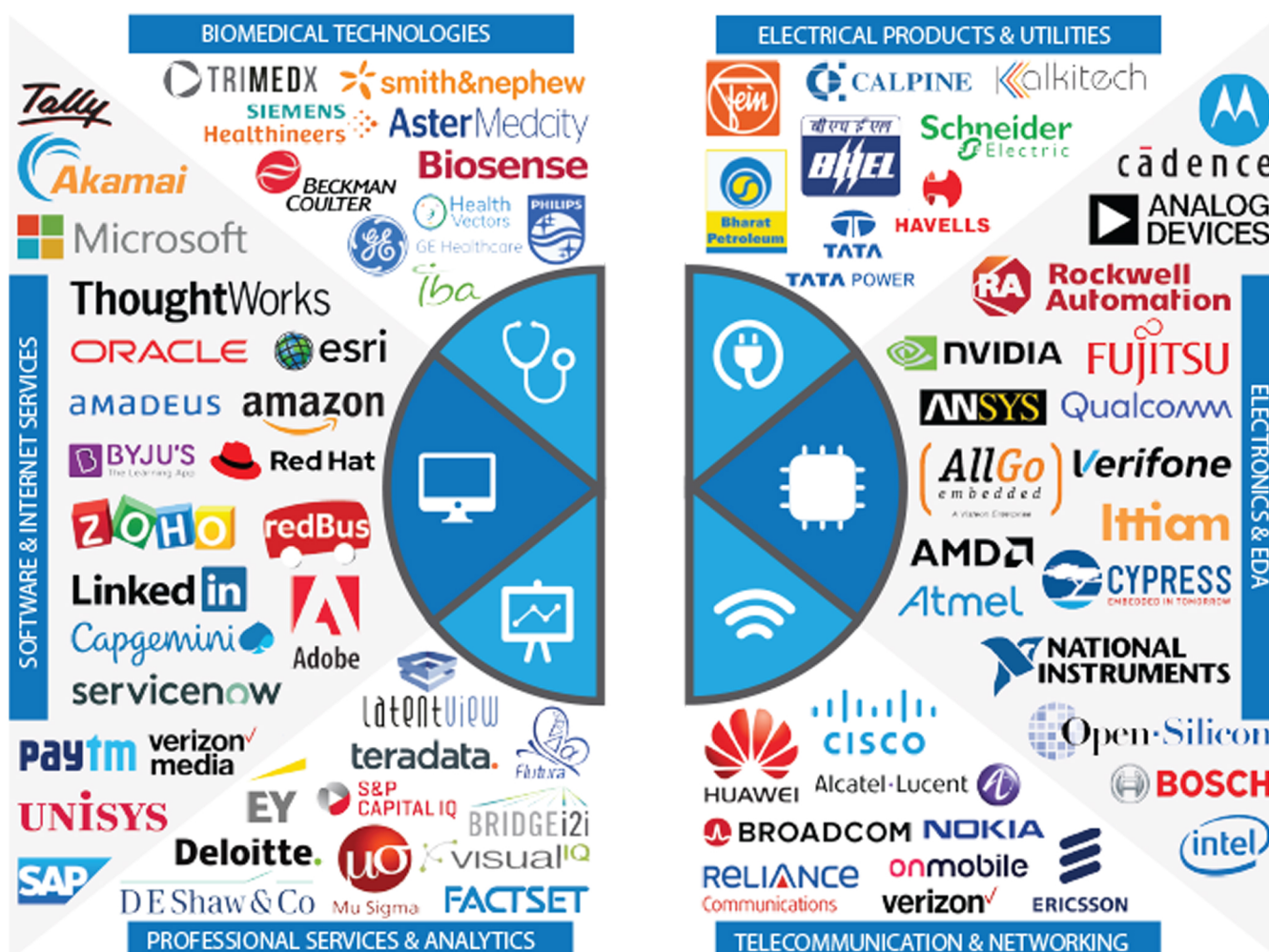
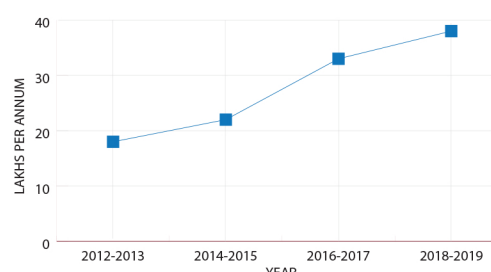
mvrajesh@mec.ac.in

9447464687

NUMBER OF OFFERS



TOP PAY PACKAGES



COLLEGE TOPPERS KTU EXAM -2020

CGPA Toppers

COMPUTER SCIENCE AND ENGINEERING



Meenakshi
CGPA: 9.54



Sneha Achamma Cherian
CGPA: 9.26



Bindya Bhaskaran
CGPA: 9.19

ELECTRONICS AND COMMUNICATION ENGINEERING



Lakshmi N
CGPA: 9.38



Mahima Liza Varghese
CGPA: 9.19



Gautham Dileep
CGPA: 9.14

ELECTRICAL AND ELECTRONICS ENGINEERING



Hridya
CGPA: 9.48



Lakshmi Priya
CGPA: 9.31



Sreelekha M L
CGPA: 9.06

ELECTRONICS AND BIOMEDICAL ENGINEERING



Delmol Denny
CGPA: 8.75



Lekshmi
CGPA: 8.65



Gopika K M
CGPA: 8.46

Men's Hostel

The men's hostel of Govt. Model Engineering College Thrikkakara is situated in the college campus itself behind the main campus. Hostel mess is run by the students committee on cost-sharing basis. The day-to-day functions of the hostel are managed by the committee and supervised by assistant warden and resident tutors.

Prof. Manilal D L

Warden

93492 76717

Mr. Arun Prasad K M

Asst. Warden

94478 37441

Library

The Model Engineering College Library has a good collection of books and journals in the areas of electronics, computer science, biomedical engineering and related subjects like science, mathematics and management. It is classified into book bank, general books, reference books, text books apart from project reports, periodicals, technical magazines and newspapers. The library has approximately 25,000 volumes of books and 60 journals.

Smt. Leena K K

Librarian

94005 80080

Model Engineering College Co-operative Society

A student co-operative society of MEC is functioning in room 203, having registration number E-1128, under Co-operative Societies Act. The store provides uniforms, lab coats, notebooks, textbooks, drawing instruments and other stationery to the students.

Mr. Santhil Kumar C A Secretary 98953 55570

IMPORTANT WEBSITES

MEC	www.mec.ac.in
IHRD	www.ihrd.ac.in
KTU	www.ktu.edu.in
CEE	www.cee.kerala.gov.in
AICTE	www.aicte.india.org

Attendance Information	www.mec.ac.in/attn/
Students Performance	www.mec.ac.in/sessional-marks/
Hostel Admission	www.mec.ac.in/hostel/



EXCEL 2019
INSPIRE | INNOVATE | ENGINEER



LAYATHARANING 2020



CHAKRAVYUH 2020



EXCEL

Excel is the annual techno-managerial fest of MEC in association with IEEE. Driven by the motto INSPIRE, INNOVATE, ENGINEER, it aims at providing a platform for students to test and showcase their technical prowess against the best in the land. Within a decade, Excel has risen to become one of the most eagerly anticipated events each year.

Mr. Jiby John

Faculty in charge

9846466044

ARTS

The Arts club is very active and provides a big platform to expose all the talents and give equal opportunities to all the students to bring up their skills in every creative perspective. Apart from the college arts fest, there are lots of inter-college events in which the college has actively participated and won. The club is responsible for organizing the Annual Arts Fest, Layatharang in our college.

Mr. Rashid M E

Faculty in charge

94473 00096

SPORTS

Govt. Model Engineering college has an excellent physical education department. The sports club of Model Engineering College is engaged in the training of the college team for various inter-collegiate events. The sports club conducts various sports and games events every year in the college. The intra-college leagues for games like football, volleyball, throwball, chess, cricket and annual sports meet are the main events. El-Juego, the Inter-College Football League attracts participants from all over the state.

Prof. Johnson Philip

Faculty in charge

94474 64759

SENATE

Senate is the supreme student body of the college. It was created with the aim of bridging the gap between the staff and student community. All activities of students and student organisations are sponsored by the Senate and issues related to the college are discussed and resolved. The Senate has three elected representatives from each class. The Senate of Govt. Model Engineering College as control and general regulation, is responsible for the maintenance of college activities. The Chairman and the other core members of the Senate are elected by the students.

Mr. Irshad Ali T K

Faculty in charge

99952 66273

CLUBS AND ACTIVITIES

IEEE

The world's largest professional organisation, IEEE, is dedicated to the pursuit of advancement and innovation in the field of technology. With over 200+ members, the Student Branch of IEEE in MEC offers a platform for students to enhance their technical and professional acumen.



Mr. Sreekumar K

Faculty in charge

9446132764

MIXED SIGNALS



An endeavour of the students of Electronics and Communication Department, the club encourages students to venture beyond the curriculum. Various workshops, lectures, competitions are organised as part of its mission to empower students with the latest technologies in the field of electronics

BMA

The Bio Medical Association focuses on developing the technical and academic knowhow of the students of the Biomedical department.



Dr. Minimol B

Faculty in charge

9447733806

EMF



Electrical Minds Forum (EMF) is the society of the students in the Electrical and Electronics Department which aims to bridge the gap between students and the great strides of the industry.

MACS

MEC Association of Computer Students (MACS) was created by the students of the Computer Science Department to educate the students on the advancement of the industry and learn concepts that are not part of the curriculum.





TREE

TREE- The Road to Environmental Excellence. The environmental club of the college that aims at the promotion of green living and the protection of the environment.

THANAL

To Humans, A Noble Acme Life (THANAL) is a social action-club dedicated to humanitarian welfare and is responsible for raising funds and other amenities to help the weaker sections of the society. Thanal also undertakes social activities in association with wedogood.in and Nummade Kochi.



Terminal



'Terminal' is the official technical publication of the college. It was an initiative taken by the students of the college, in association with the IEEE wing, aimed towards fostering interest in readers about the diverse technical developments around them, both locally and globally.

Debate Club

An interactive club, that was started in 2014 by a group of vibrant students, which intends to give all those who have flair for expressing their thoughts in speech and ink.



Greens



Greens was formed by the Mechanical Engineering Association of the college to uphold the principle of controlled exploitation, conservation and preservation of energy. It aims at encouraging engineers to become green engineers who promote the principles of nature.

Entrepreneurship Cell

To Develop, Nurture, Sustain the spirit of entrepreneurship E-Cell, the Entrepreneurship forum of Model Engineering College aims to equip students with managerial skills while encouraging an entrepreneurship spirit. An Internet-of-Things (IoT) Lab has been set up to explore the potential of innovative practices for IoT research.



Third Eye



Third Eye is a photography club which brings together the students who share the passion for photography. It nurtures and showcases the skills of the budding photographers.

ILLUMINATI

Illuminati, the quizzing fraternity of Model Engineering College is one among the most active students' societies of the college. They have conducted over a hundred intra- and inter-collegiate quizzes and have brought home numerous honours.



IETE



The Institution of Electronics and Telecommunication Engineers is India's leading recognized professional society devoted to the advancement of Science and Technology of Electronics, Telecommunication & IT.

WIE

IEEE WIE (Women In Engineering), a vibrant community of IEEE women collectively use their diverse talents to innovate for the benefit of humanity. Their mission is to facilitate the recruitment and retention of women in technical disciplines globally.



FORTITUDE



Fortitude is a safe space within MEC that you can enter to engage in healthy, introspective, & inclusive conversations and activities revolving around the topic of Mental Health. Through regular meetings, workshops, webinars, and the like, the club aims to destigmatize and spread awareness about Mental Health, as a way of bridging the gap between students and Mental Health resources.



National Service Scheme

National Service Scheme is a youth service programme which seeks to arouse social consciousness among the youth with an overall objective of personality development through community service. The e-Waste campaign by MEC NSS Unit got state-wide acclaim.

Fablab

MEC is one among a few Government Engineering Colleges to have a Fablab facility. Fab-labs provide widespread access to modern means for invention and for research in digital fabrication, ultimately aiming at developing programmable molecular assemblers to make almost anything.

Solar Power Station

MEC is the first academic institution in Kerala to have a rooftop grid-connected solar power generation station installed. The installed capacity is 30kW and the work was initiated by the EEE students with support from ex-MECians, faculty, KSEB etc.

LITERARY CLUB

The purpose of this club is to build a reading community which includes every person regardless of their favourite genre, be it fiction, poetry, history, psychology, biographies, technology, and anything in the world the students want to read and learn more about.

തൂടി

കേരളത്തിൽ പൊതുവെയും വിദ്യാഭ്യാസ രംഗത്ത് പ്രത്യേകിച്ചും മാതൃഭാഷ അവഗണന നേരിടുന്ന സാഹചര്യത്തിൽ, കലാലയത്തിൽ ഭാഷയുടെ ഉന്നമനത്തിനായി രൂപീകൃതമായ സംഘടനയാണ് തൂടി. മലയാളഭാഷയെയും സംസ്കാരത്തെയും അടുത്തറിയുക, കൂടുതൽ മനസ്സിലാക്കുക, പഠിക്കുക എന്നീ പ്രാഥമിക ലക്ഷ്യങ്ങൾക്ക് പുറമെ വിദ്യാർത്ഥികളുടെ സർഗാത്മകതയെ പ്രോത്സാഹിപ്പിക്കുന്നതിനുള്ള പ്രവർത്തനങ്ങളും തൂടി സജീവമായി ചെയ്തു വരുന്നു.

GREEN PROTOCOL

Govt. of Kerala has instructed that the Green Protocol initiatives be adhered to in Govt. Model Engineering College. Green protocol is essentially a set of measures which when implemented results in significant reduction of waste. The primary focus is on waste minimization through prevention of use of disposables and using reusable alternatives. With its implementation, non-biodegradable waste generation becomes close to zero.

How to follow Green Protocol?

- Avoid the use of all types of disposables (including plastic, paper) in daily life
- Always use cups and containers that can be washed and reused instead of those made of plastic or paper
- Avoid banned plastic materials; follow government rules in this regard
- Segregate bio- and non-biodegradable; compost biodegradable at source using simple and appropriate composting devices
- Keep the non-biodegradable clean and dry and store separately based on the type; hand it over to local body systems or scrap dealer for recycling
- Avoid 'use-and-throw' carry bags. Always use bags made of eco-friendly materials
- Always use cloth banners instead of flex
- Use bamboo baskets or ones made of eco-friendly materials instead of plastic waste baskets
- Always use eco-friendly materials like leaves, flowers, etc for decoration and while making bouquets for felicitating guests.



**SUCHITWA
MISSION**
LOCAL SELF GOVERNMENT DEPARTMENT KERALA

ROUTE MAP

